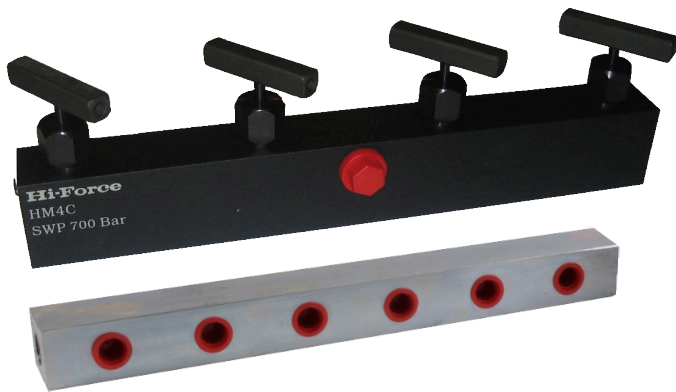


MANIFOLDS

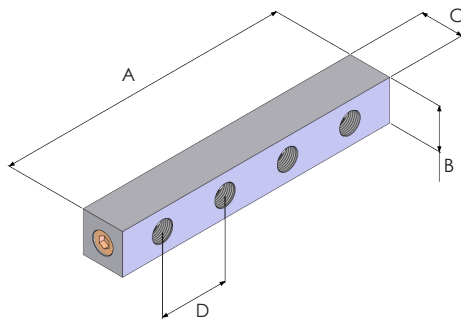


Working pressure 10000 psi

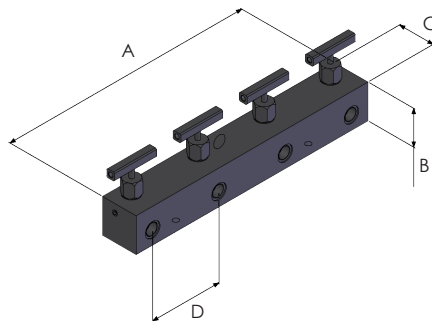
Choice of open or controlled manifolds

2, 4, 5, 6 or 8 outlet port models available

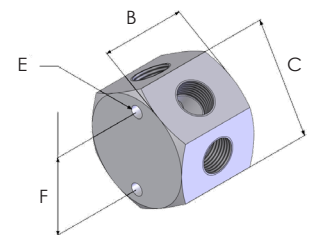
- ▶ Designed for easy control of the direction of flow of the hydraulic fluid within the system
- ▶ Available as open manifold blocks or with individual needle type shut off/throttle valves on each outlet



HM* & HM*L



HM*C



HM5

Model number	Type	Design	Number of outlets	Connection ports female threads		Weight (lbs)	Dimensions (in)					
				Inlet	Outlet		A	B	C	D	E	F
HM2	open manifold	parallel	2	3/8"-18 NPT	2 x 3/8"-18 NPT	2.2	4.49	1.26	1.26	1.97	-	-
HM4	open manifold	parallel	4	3/8"-18 NPT	4 x 3/8"-18 NPT	3.3	8.43	1.26	1.26	1.97	-	-
HM5	open manifold	hexagon	5	3/8"-18 NPT	5 x 3/8"-18 NPT	1.5	-	1.62	2.01	-	M6	1.5
HM6	open manifold	parallel	6	3/8"-18 NPT	6 x 3/8"-18 NPT	4.4	12.37	1.26	1.26	1.97	-	-
HM8	open manifold	parallel	8	3/8"-18 NPT	8 x 3/8"-18 NPT	5.5	16.31	1.26	1.26	1.97	-	-
HM4L	open manifold	extended parallel	4	3/8"-18 NPT	4 x 3/8"-18 NPT	5.3	15.52	1.26	1.26	4.33	-	-
HM6L	open manifold	extended parallel	6	3/8"-18 NPT	6 x 3/8"-18 NPT	8.2	24.19	1.26	1.26	4.33	-	-
HM2C	controlled manifold	parallel	2	3/8"-18 NPT	2 x 3/8"-18 NPT	4.4	5.91	2.01	1.5	3.94	-	-
HM4C	controlled manifold	parallel	4	3/8"-18 NPT	4 x 3/8"-18 NPT	7.7	13.79	2.01	1.5	3.94	-	-